

J-ST03[®]



FEATURES AND SPECIFICATIONS

Construction

- Easy to open the strip light for quick installation.
- Non-Yellow PC Lens.
- Linkable design for continuous row mount
- 2FT , 4FT and 8FT Options

Electrical

- Input Voltage: 120-277VAC
- Compatible with standard 0-10V dimmer
- Transparent end cap to make light without shadow when continuous row installation
- Wattage&CCT switchable through DIP-switches.
- Emergency battery,motion sensor,surface mounted kitfor option

Applications

- Offices, retail, schools, restaurants, healthcare, residential, and hospitality applications.

Installation

- Suspend the strip light by using suspension wire.
- Continuous row installation
- Surface mounted

Listing

- Comply with the requirements of the Standard(s) for Luminaires (CAN/CSA-C22.2No.250.0) and are identified with the cETL Listed Mark
- DesignLights Consortium[®](DLC)Premium.

Warranty

- 5-year limited warranty

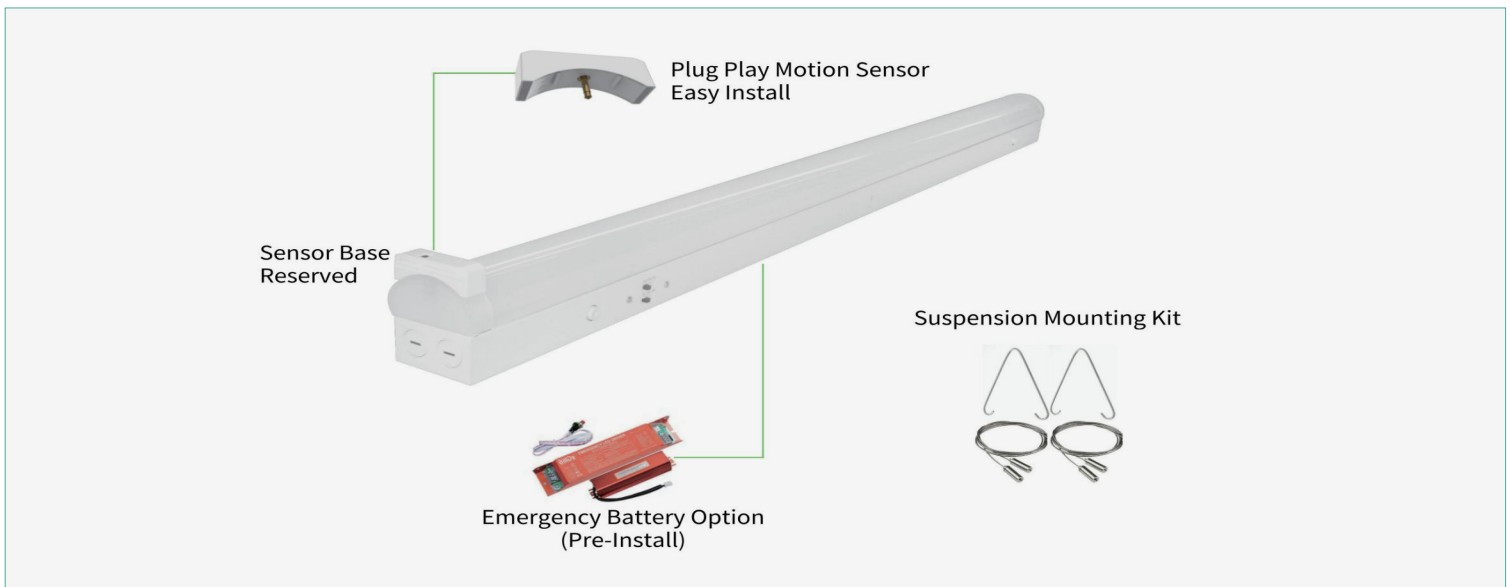
| Specs at a Glance | * Nominal Wattage (Switchable) | | |
|-------------------|---|--|---|
| Configuration | J-ST03-2FT24WS-3545K | J-ST03-4FT40WS-3545K | J-ST03-8FT90WS-3545K |
| CCT (K) | 3500K-4000K-5000K Tunable | | |
| Wattage (W)* | 10W/15W/24W | 24W/32W/40W | 64W/75W/90W |
| Lumens (lm) | 24W= 3,120lm 15W= 1,950lm 10W = 1,300lm | 40W= 5,200lm 32W= 4,160lm 24W= 3,120lm | 90W= 11,700lm 75W= 9,750lm 64W= 8,320lm |
| Efficacy (LPW) | 130lm/w | | |
| Size | 2FT | 4FT | 8FT |
| CRI | >80 | | |
| Input Voltage | 120-277V | | |
| Operating Temp | -20°C-45°C | | |
| Certifications | ETL&DLC 5.1 Premium | | ETL&DLC Standard |
| Warranty | 5-year limited warranty | | |

Ordering information

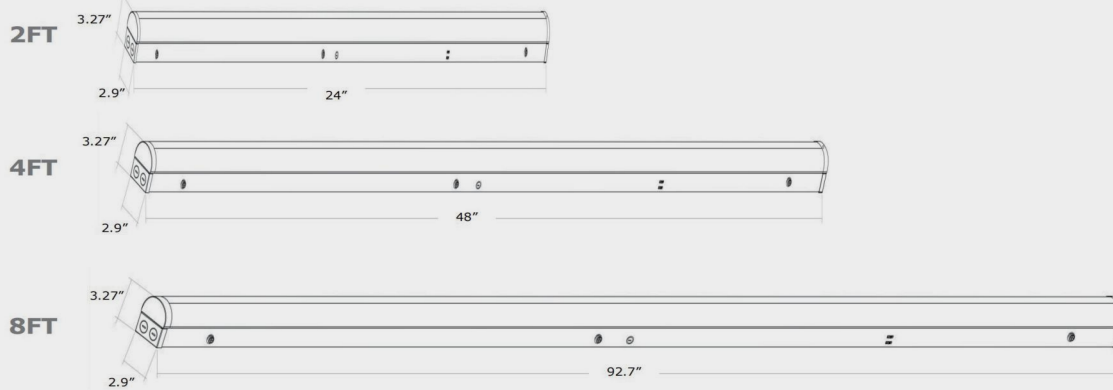
Example: J-ST03-4FT40WS-3545K-EM

| Brand | Size LX | Wattage xxxW | CCT XX | Blank xx | Input Voltage C |
|--------------|----------------------------|---|--|--|-----------------|
| JEN Lighting | 2F 2FT 4F 4FT 8F 8FT | 20 10W/15W/24W 45 20W/30W/45W 90 70W/80W/90W | 3500-4000-5000K S CCT and Wattage Selectable | Blank: Motion Sensor &Emergency Backup M: Motion Sensor B: Emergency Backup N: Non-montion & emergency | A 100-347ac |

Detail



Dimensions



ACCESSORIES

Emergency Battery

Plug-in Microwave Sensor

Remote Controller

Microwave & Bluetooth Sensor

Junction Box Cover Plate

Linkable Connector



Curved Plug-in Microwave Sensor

- Curved design special for strip light
- Detection Distance: $\geq 3\text{m}/9\text{ft}$
- Tiny Microwave Sensor with/out Bluetooth-Mesh
- Audio-Jack Classic Connection, 0-10V Dimming, with Daylight Harvesting



Internal Emergency Battery

- UL listed approved
- Emergency power: 8W
- Charging time: 24 hours
- Illumination time: 90 minutes



Remote Controller

- LCD screen display
- Memory and apply function
- Universal smart controller for dimmable sensor



Junction Box Cover Plate

- To cover the ceiling hole
- Color: White electrical box cover



Linkable Connector

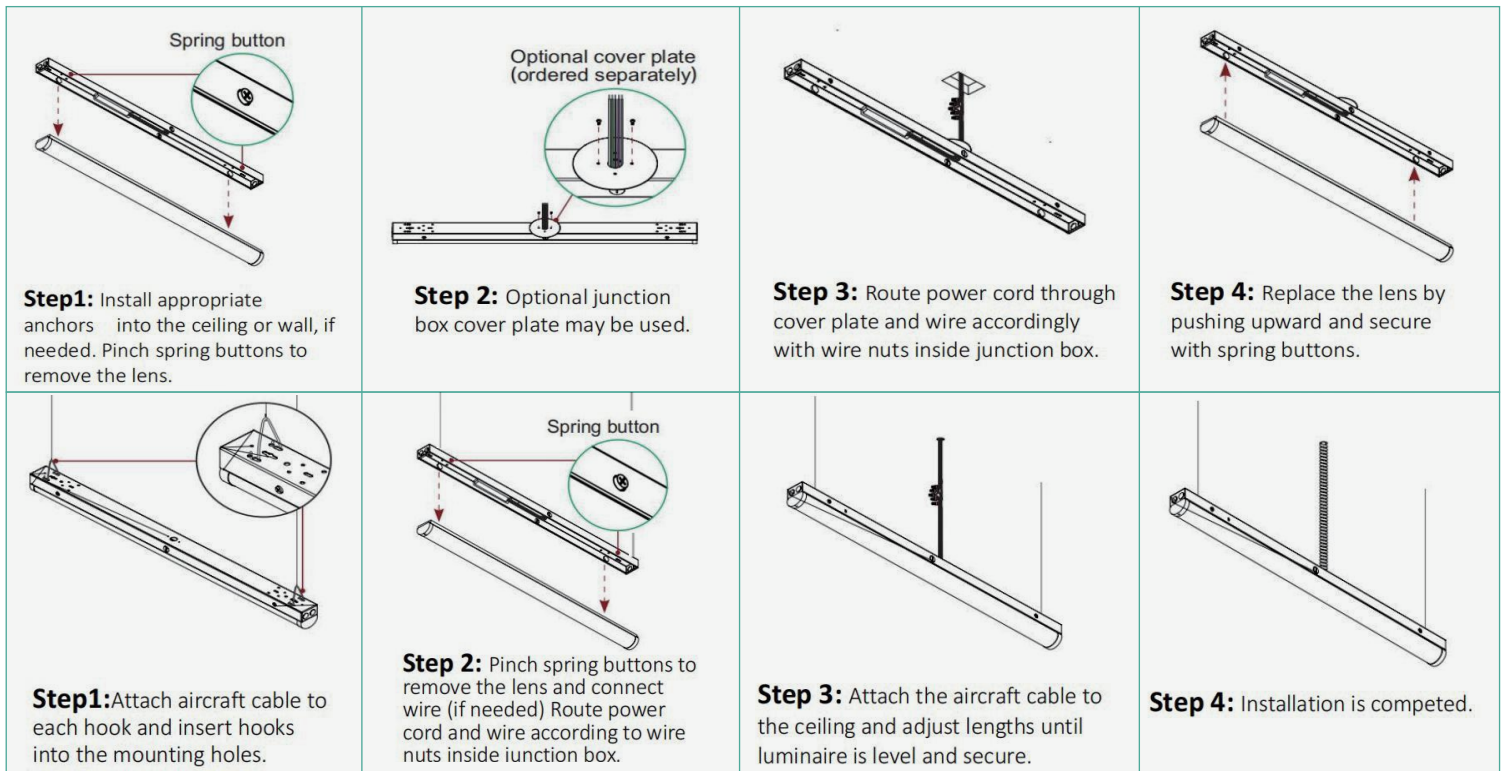
- For continuous row installation
- Color: White steel



Suspension Kit

- For suspend the strip light
- Material: stainless steel

Linkable Plate (Sold Separately)



Packing Info

| SIZE | 4PCS/CARTON | | | CONTAINER | | |
|------|--------------------|----------|----------|------------|------------|-----------|
| | DIMENSION(INCH) | N.W(LBS) | G.W(LBS) | 20'GP(PCS) | 40'GP(PCS) | 40HQ(PCS) |
| 2ft | 25.61"x7.80"x7.92" | 8.82 | 11.02 | 4330 | 8968 | 10514 |
| 4ft | 50.79"x7.48"x7.87" | 16.53 | 18.08 | 2284 | 4732 | 5548 |
| 8ft | 98.43"x7.91"x7.87" | 35.27 | 39.68 | 1114 | 2308 | 2706 |