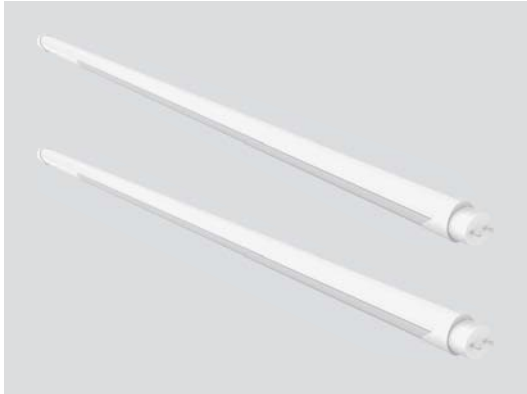




Type A+B Ballast compatible LED T8 Tube



FEATURES AND SPECIFICATIONS

Construction

- 4FT T8 LED Lamp | 10/12/15/18/22W | 3500/4000/5000/5700/6500K
- > 80 CRI
- High-Efficiency | Single-or Double-ended Line Voltage Wiring
- Housing: Aluminum+PC

Electrical

- Input Voltage: 120-277Vac 50/60Hz
- Color Select technology (3500/4000/5000/5700/6500K)
- Frosted PC lens eliminates pixelation
- Approximately 60% more energy-efficient than standard F32T8 lamps
- 140+ Lumens per Watt

Applications

- Offices, retail, schools, restaurants, healthcare, residential, and hospitality applications.

Installation

- Replacement for conventional fluorescent lamp
- Single- or double-ended line voltage wiring
- Operating temperature: -20°C/-4°F to 45°C/113°F
- Storage temperature: -30°C/-22°F to 60°C/140°F

Listing

- ETL Listed
- DesignLights Consortium®(DLC) Standard.

Warranty

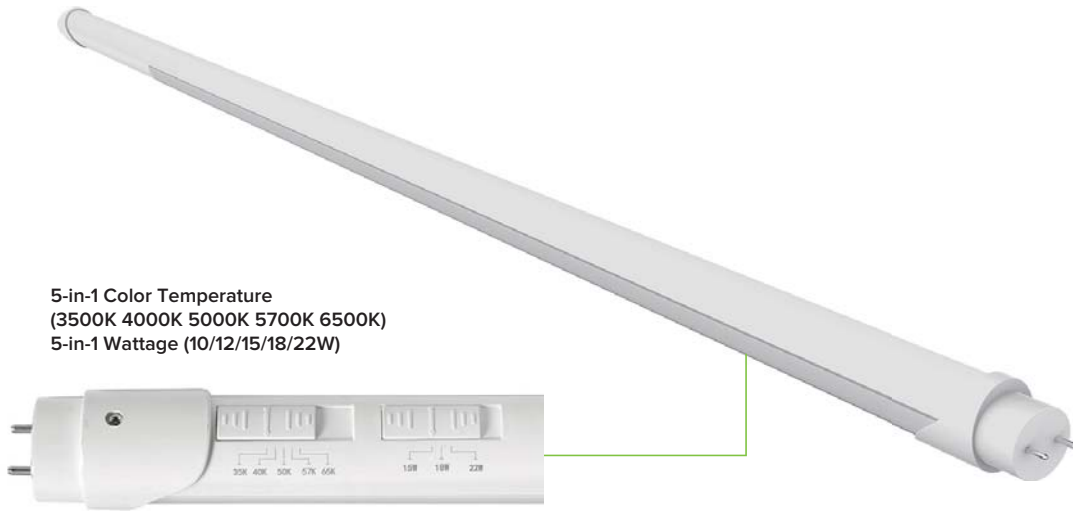
- 5-year limited warranty

Specs at a Glance	* Nominal Wattage (Switchable)
Configuration	T8-FAB-XXW-TCP
Wattage (W)*	10/12/15/18/22W Wattage Adjustable
Lumens (lm)	1,400-3,080lm
CCT (K)	3500/4000/5000/5700/6500K(Switchable)
Efficacy (LPW)	Up to 140
CRI	>80
Input Voltage	120-277VAC, 50/60Hz, 0-10V Dimmable
Operating Temp	-20°C/-4°F to 45°C/113°F
Certifications	ETL DLC 5.1 Standard
Warranty	5-year limited warranty

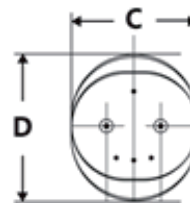
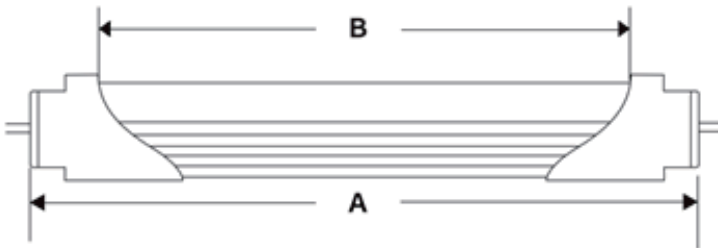


Ordering information

Model	Description
T8-FAB-XXW-TCP	LED Tube,Power Switchable 10/12/15/18/22W, Color Switchable 3500/4000/5000/5700/6500K , 120-277VAC,Single- or double-ended line voltage wiring



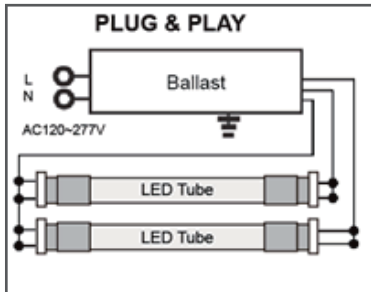
Dimensions



LAMP DIMENSIONS	
A	47.17"
B	45.47"
C	1.32"
D	1.15"



Installation Instruction



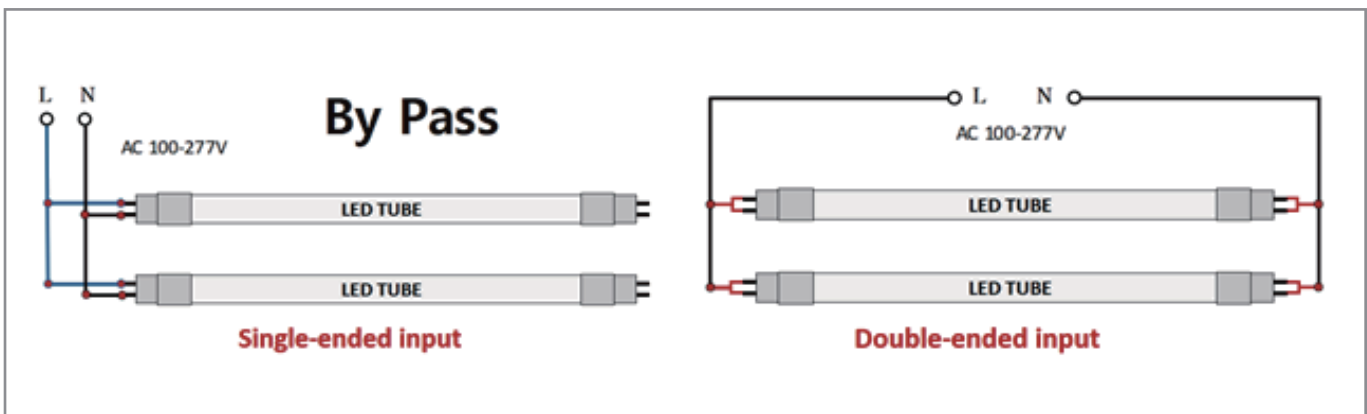
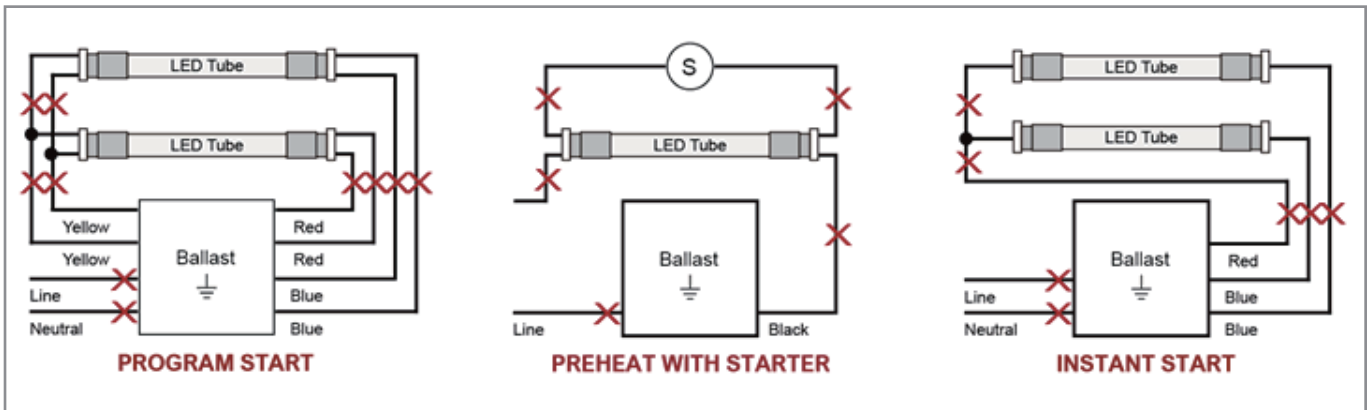
Direct Replacement (With Existing Ballast)

Warning: Check Ballast Compatibility List before installation.

- Turn power off.
- Remove lens or diffuser, if applicable.
- Remove existing fluorescent lamp(s) from the luminaire.
- Install the LED replacement lamp(s), one lamp for each fluorescent lamp removed.
- Replace lens or diffuser back in place, if applicable.
- Turn power back on.

By-pass Replacement (Without Ballast)

- Disconnect power from fixture.
- Remove fluorescent lamps.
- Remove lens and wiring compartment, if applicable.
- Cut all wires connected to ballast (see Figure A: Typical Ballast Configurations).



Packing Information

Model number	L /inch	W /inch	H /inch	QTY/ctn	G.W./lbs	CTN QTY/pallet
T8-FAB-XXW-TCP	48.9	7.5	7.5	25	15.9	1250pcs